

Communication Products

| | |
|---|-----|
| 3M™ Scotchlok™ Connectors and Tools | 445 |
| 3M™ MS ² ™ Splicing System | 453 |
| 3M™ SLiC™ Aerial Closures and Terminals | 455 |
| 3M™ Better Buried Closures | 458 |
| 3M™ Scotchcast™ PIC Encapsulating Closure Kits | 459 |
| 3M™ Scotchcast™ Shield Bonding Products | 460 |
| 3M™ Armorcast Sheath Repair Products | 461 |
| 3M™ Fibrlok™ Single Fiber Optical Splicing System 2500 Series | 462 |
| 3M™ Fiber Optic Splice Closure 2178 Series and Accessories | 465 |
| 3M™ Fiber Dome Closure FDC and FDT Series | 469 |
| 3M™ Fiber Connectors | 472 |
| 3M™ Fiber Optic Termination Kits and Accessories | 475 |



3M™ Scotchlok™ Connectors and Tools

More than 50 years ago, 3M introduced the industry's original insulation displacement connector—the 3M™ Scotchlok™ Connector UR. Today, with increased demand for high-speed and high-bandwidth networks, the complete series of 3M connectors and tools is now more important than ever. Through the years, we have learned new technologies while building on the original successful design, shape, color-coded cap concepts, and element configuration of the original insulation displacement contact design. We offer many connectors tested to Cat. 5 compliance allowing service providers the ability to meet the demand for enhanced services such as high speed Internet, video-on-demand, and video conferencing. Double elements, solvent-resistant plastic construction, full wire range product offering and factory installed sealant are just some of features and benefits of 3M Scotchlok communication connectors.

3M™ Scotchlok™ Butt Connectors

Scotchlok butt connectors employ a specially designed, wire insulation displacement contact to make a reliable electrical connection to each wire. A “live-spring” joint is made by driving the wire down into the “U” contact connector. This process displaces the wire insulation and grasps all conductors with a firm pressure, all in one motion. No stripping of wire insulation is required. Some connectors include a factory installed sealant to help protect against corrosion and provide moisture resistance. They are also available in dry versions for central office and vault applications. Available butt connectors include: UR2, UR2-D, UR, UP3, UAL, UY2, UY2-D, UY, UP2, 211, UCC, UPC, 557-TG2

3M™ Scotchlok™ IDC Butt Connector UR2

The UR2 connector is gel filled for moisture resistance and is suitable for PIC cable applications, filled or unfilled. It accepts either two or three wires within wire range of 0.4-0.9 mm (26-19 AWG) and insulation outside diameter up to 2.08 mm/.082". It is made of polypropylene and is Cat. 5 compliant.



3M™ Scotchlok™ Crimping Tool E-9J

3M™ Scotchlok™ IDC Butt Connector UR2-D

The UR2-D is the dry version of the UR2 for use where moisture resistance is not needed and suitable for PIC, pulp or paper cable applications.

3M™ Scotchlok™ IDC Butt Connector UR

The UR connector is gel filled for moisture resistance and for PIC cable applications, filled or unfilled. It accepts two or three wires within wire range of 0.4-0.9 mm (26-19 AWG) and insulation outside diameter up to 1.52 mm/.060". It is made of polycarbonate and is Cat. 5 compliant.

3M™ Scotchlok™ IDC Butt Connector UP3

The UP3 connector is dry for flame retardant applications. It accepts two or three wires within wire range of 0.4-0.9 mm (26-19 AWG) and insulation diameter up to 1.52 mm/.06". It is made of polycarbonate and is UL Listed.

3M™ Scotchlok™ IDC Butt Connector UAL

The UAL connector is gel filled for moisture resistance and for PIC cable applications, filled or unfilled. It accepts two or three wire Cu, 0.5-.09 mm (24-19 AWG) or Al, 0.8-1.2 mm (20-17 AWG) or a combination of both and insulation diameter up to 2.08 mm/.082". It is made of polycarbonate.

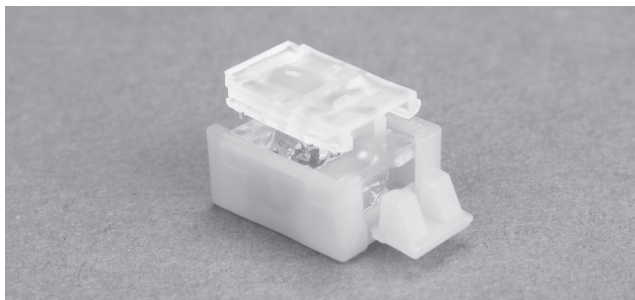
3M™ Scotchlok™ IDC Butt Connector UY2

The UY2 connector is gel filled for moisture resistance and is suitable for PIC cable applications, filled or unfilled.

It accepts two wires within wire range of 0.4-0.9 mm (26-19 AWG) and insulation outside diameter up to 2.08 mm/.082". It is made of polypropylene and is Cat. 5 compliant.

3M™ Scotchlok™ IDC Butt Connector UY2-D

The UY2-D is the dry version of the UY2 for use where moisture resistance is not needed and suitable for PIC, pulp or paper cable applications.



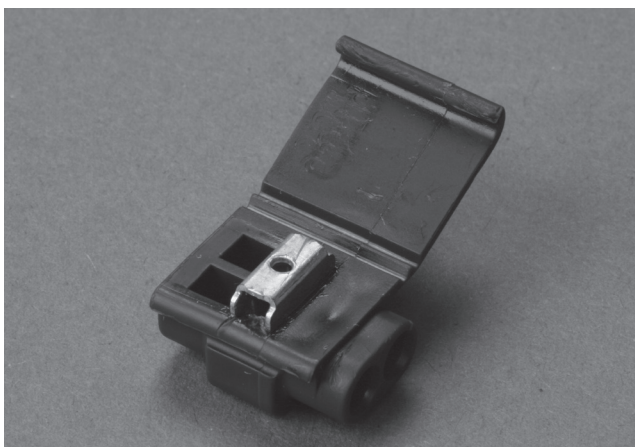
3M™ Scotchlok™ IDC Butt Connector 211

3M™ Scotchlok™ IDC Butt Connector UY

The UY connector is gel filled for moisture resistance and is suitable for PIC cable applications, filled or unfilled. It accepts two wires within wire range of 0.4-0.7 mm (26-22 AWG) and insulation outside diameter up to 1.52 mm/.06". It is made of polycarbonate and is Cat. 5 compliant.

3M™ Scotchlok™ IDC Butt Connector UP2

The UP2 connector is dry for flame retardant applications. It accepts two wires within wire range of 0.4-0.7 mm (26-22 AWG) and insulation diameter up to 1.52 mm/.06". It is made of polycarbonate and is UL Listed.



3M™ Scotchlok™ Butt Connector 557-TG2

3M™ Scotchlok™ IDC Butt Connector 211

The 211 trim-out connector is primarily used to cut out defective connectors without interrupting service. The side loading design and pre-crimp feature make it especially useful where conductor length is limited. It contains a built-in cut-off blade and test port with built-in strain relief and can also be used for standard butt splicing. The 211 is gel filled for moisture resistance suitable for PIC cable applications, filled or unfilled. It accepts two wires within wire range of 0.4-0.9 mm (26-19 AWG) and insulation outside diameter up to 2.08 mm/.082". It is made of polypropylene and is Cat. 5 compliant.

3M™ Scotchlok™ IDC Connector UCC

The UCC clearing cap is used to isolate a full cable pair. It contains a non-conductive plastic blade to hold conductors in place. Gel filled for moisture resistance, it is suitable for PIC cable applications, filled or unfilled. It accepts two wires within wire range of 0.4-0.7 mm (26-22 AWG) and insulation outside diameter up to 1.52 mm/.06". It is made of polycarbonate.



3M™ Scotchlok™ Butt Connector UPC

3M™ Scotchlok™ IDC Connector UPC

The UPC clearing cap is dry for flame retardant applications. It accepts two wires within wire range of 0.4-0.7 mm (26-22 AWG) and insulation outside diameter up to 1.52 mm/.06". It is made of polycarbonate and is UL Listed.

3M™ Scotchlok™ IDC Butt Connector 557-TG2

The 557-TG2 self-stripping drop wire connector is for solid copper aerial drop wire. It is gel filled for moisture resistance and accepts two wires within wire range of 0.6-1.3 mm (22-16 AWG) and insulation outside diameter up to 3.0 mm/.12". It is made of polypropylene.

3M™ Scotchlok™ Tap Connectors

3M™ Scotchlok™ Tap Connectors enable the user to tap into another wire without interrupting service, saving the technician valuable time. A U-shaped element inside each connector displaces wire insulation material and makes contact with the copper conductor. Some Scotchlok Tap Connectors also include factory-installed sealant to help protect against corrosion and provide moisture resistance. They are also available in dry versions for central office and vault applications. Available tap connectors include: UB2A, UB2A-D, UG, UPB.



3M™ Scotchlok™ Tap Connector UB2A

3M™ Scotchlok™ IDC Tap Connector UB2A

The UB2A connector allows direct tapping into existing PIC insulated solid copper conductors without interrupting service. It has a pre-crimp feature that equates to time savings for the craftsperson. It is gel filled for moisture resistance and for PIC cable applications, filled or unfilled. It accepts conductors within wire range of 0.4-0.9 mm (26-19 AWG) and insulation outside diameter up to 2.08 mm/.082". It is made of polypropylene and is Cat. 5 compliant.

3M™ Scotchlok™ IDC Tap Connector UB2A-D

The UB2A-D is the dry version of the UB2A for use where moisture resistance is not needed and suitable for PIC, pulp or paper cable applications.

3M™ Scotchlok™ IDC Tap Connector UG

The UG connector allows direct tapping into existing plastic insulated solid copper conductors without interrupting service. It is gel filled for moisture resistance and for PIC cable applications, filled or unfilled. It accepts conductors within wire range of 0.4-0.9 mm (26-19 AWG) tap and 0.4-0.7 mm (26-22 AWG) run wire with insulation outside diameter up to 1.54 mm/.061" tap and 1.12 mm/.044" run wire. It is made of polycarbonate.

3M™ Scotchlok™ IDC Tap Connector UPB

The UPB connector is dry for flame retardant applications. It accepts conductors within wire range of .04-.07 mm (26-22 AWG) and insulation outside diameter up to 1.27 mm/.050". It is made of polycarbonate and is UL Listed.

3M™ Scotchlok™ Inline Connectors

3M™ Scotchlok™ Inline Connectors are designed to accommodate larger gauge solid copper or copper coated steel conductors. They are a safe, simple way of making a secure connection for four wire (or one full pair) applications. All are sealed and are moisture resistant. Available inline connectors include: UDW2, U1B, and U1R.

3M™ Scotchlok™ IDC Inline Connector UDW2

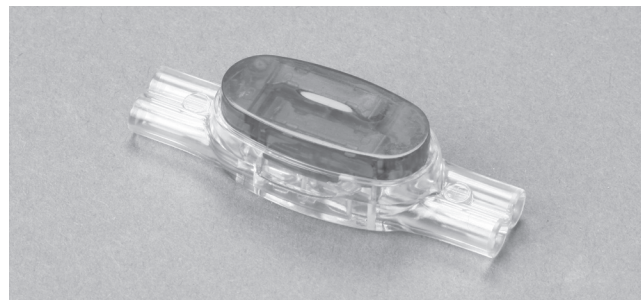
The UDW2 is a four wire (one full pair) aerial inline drop-wire connector for copper or copper coated steel conductors. It is used for mid-span splices where strain relief is provided. Gel filled for moisture resistance and for PIC cable applications, it accepts conductors within wire range of 0.9-1.3 mm (19-16 AWG) and insulation outside diameter up to 4.4 mm/.175". It is made of polycarbonate.

3M™ Scotchlok™ IDC Inline Connector U1B

The U1B is a four wire (one full pair) inline connector for solid copper wire. It is gel filled for moisture resistance and for PIC cable applications. It accepts conductors within wire range of 0.9-1.3 mm (19-16 AWG) and insulation outside diameter up to 3.16 mm/.125". It is made of polycarbonate.

3M™ Scotchlok™ IDC Inline Connector U1R

The U1R is a four wire (one full pair) inline connector for solid copper wire. It is gel filled for moisture resistance and for PIC cable applications. It accepts conductors within wire range of 0.5-0.9 mm (24-19 AWG) and insulation outside diameter up to 3.16 mm/.125". It is made of polycarbonate.



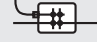

3M™ Scotchlok™ Inline Connector U1R

Specifications for 3M™ Scotchlok™ Connectors and Tools

| Connector | Type Connector | Special Features | Maximum Insulation O.D. | | PIC-Unfilled and PIC-Filled | | Pulp or Paper | |
|---|---|--|--|--|-----------------------------|--------------------------|---------------|-------------|
| | | | Metric (mm) | Inches | AWG | Metric (mm) | AWG | Metric (mm) |
| UR2  |  | Gel-Filled Polypropylene Cat.5 | 2,08 mm | 0.082" | 26-19 | 0,4-0,9 mm | N/A | N/A |
| UR2-D  |  | Dry Polypropylene | 2,08 mm | 0.082" | 26-19 | 0,4-0,9 mm | 26-19 | 0,4-0,9 mm |
| UR  |  | Gel-Filled Polycarbonate Cat. 5 | 1,52 mm | 0.060" | 26-19 | 0,4-0,9 mm | N/A | N/A |
| UY2  |  | Gel-Filled Polypropylene Cat.5 | 2,08 mm | 0.082" | 26-19 | 0,4-0,9 mm | N/A | N/A |
| UY2-D  |  | Dry Polypropylene | 2,08 mm | 0.082" | 26-19 | 0,4-0,9 mm | 26-19 | 0,4-0,9 mm |
| UY  |  | Gel-Filled Polycarbonate Cat.5 | 1,52 mm | 0.060" | 26-22 | 0,4-0,7 mm | N/A | N/A |
| 557-TG2*  |  | Gel-Filled Polypropylene | 3,0 mm | 0.12" | 22-16 | 0,6-1,3 mm | N/A | N/A |
| UP2  |  | Dry Flame Retardant UL Listed Polycarbonate | 1,52 mm | 0.060" | 26-22 | 0,4-0,7 mm | 26-22 | 0,4-0,7 mm |
| UP3  |  | Dry Flame Retardant UL Listed Polycarbonate | 1,52 mm | 0.060" | 26-19 | 0,4-0,9 mm | 26-19 | 0,4-0,9 mm |
| UAL  |  | Gel-Filled For Aluminum Polycarbonate | Outside parts: 2,08 mm Middle Prts: 1,88 mm | Outside parts: 0.082" Middle Prts: 0.074" | 20-17 AL 24-19 CU | 0,8-1,2 AL 0,5-0,9 CU | N/A | N/A |
| 211  |  | Gel-Filled Polypropylene Cat. 5 | 2,08 mm | 0.082" | 26-19 | 0,4-0,9 mm | N/A | N/A |

*Inline and drop wire connectors can only be used with E-9BM. **Not recommended for 19 gauge (0.9 mm) conductor and larger.

Specifications for 3M™ Scotchlok™ Connectors and Tools

| Connector | Type Connector | Special Features | Maximum Insulation O.D. | | PIC-Unfilled and PIC-Filled | | Pulp or Paper | |
|---|---|--|-----------------------------|------------------|-----------------------------|--------------------------|---------------|-------------|
| | | | Metric (mm) | Inches | AWG | Metric (mm) | AWG | Metric (mm) |
| UB2A  |  | Gel-Filled Polypropylene Cat. 5 | 2,08 mm | 0.082" | 26-19 | 0,4-0,9 mm | N/A | N/A |
| UB2A-D  |  | Dry Polypropylene | 2,08 mm | 0.082" | 26-19 | 0,4-0,9 mm | 26-19 | 0,4-0,9 mm |
| UG  |  | Gel-Filled Polycarbonate | Butt 1,67 mm Tap 1,12 mm | 0.066" 0.044" | 26-19 26-22 | 0,4-0,9 mm 0,4-0,6 mm | N/A | N/A |
| UPB  |  | Dry UL Listed Flame Retardant Polycarbonate | 1,27 mm | 0.050" | 26-22 | 0,4-0,7 mm | 26-22 | 0,4-0,7 mm |
| UDW2*  |  | Full Pair Drop Pair Polycarbonate | 4,4 mm | 0.175" | 19-16 | 0,9-1,3 mm | N/A | N/A |
| U1B*  |  | Gel-Filled Full Pair Polycarbonate | 3,18 mm | 0.125" | 19-16 | 0,9-1,3 mm | N/A | N/A |
| U1R*  |  | Gel-Filled Full Pair Polycarbonate | 3,18 mm | 0.125" | 24-19 | 0,5-0,9 mm | N/A | N/A |
| UCC  |  | Gel-Filled Polycarbonate | 1,52 mm | 0.060" | 26-22 | 0,4-0,7 mm | N/A | N/A |
| UPC  |  | UL Listed Flame Retardant Polycarbonate | 1,52 mm | 0.060" | 26-22 | 0,4-0,7 mm | 26-22 | 0,4-0,7 mm |

To reduce fatigue, use tool within each group with highest mechanical advantage, indicated in ().



E-9BM
(10:1)



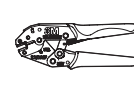
E-9C
(7:1)



E-9E
(4:1)



E-9Y**
(3:1)



E-9R
(10:1)



E-9J
(10:1)

*Inline and drop wire connectors can only be used with E-9BM. **Not recommended for 19 gauge (0.9 mm) conductor and larger.

Ordering Information for 3M™ Scotchlok™ Connectors

| Connector | Box Packaging Weight kg (lbs.) Min. Order UPC | Bulk Packaging Weight kg (lbs.) Min. Order UPC | Cartridge Packaging Weight kg (lbs.) Min. Order UPC | Jar Packaging Weight kg (lbs.) Min. Order UPC | Clamshell Packaging Weight kg (lbs.) Min. Order UPC | |
|-----------|--|--|--|---|--|--|
| UR2 | 100/box, 1000/cs. 1.36 (3) 1000 connectors 051115-26201 | 500/box, 5000/cs. 6.7 (15.2) 5000 connectors 051115-26200 | 10/cart, 100/pak., 1000/cs. 2.09 (4.6) 1000 connectors 051115-26202 | 500/btl., 5000/cs. 5.9 (13.1) 10 btl. 051115-26116 | 25/pak, 1000/cs. 1.8 (3.9) 40 pkgs. 051115-26117 | 50/pak, 1000/cs. 1.54 (3.4) 20 pkgs. 051115-26212 |
| UR2-D | N/A N/A N/A N/A | N/A N/A N/A N/A | 10/cart, 100/pak., 1000/cs. 2.09 (4.6) 1000 connectors 054007-71475 | 500/jar, 10/cs. 5.98 (13.19) 5000 connectors 051115-30060 | N/A N/A N/A N/A | |
| UR | 100/box, 1000/cs. 1.36 (3) 1000 connectors 051115-26230 | N/A N/A N/A N/A | 10/cart, 100/pak., 1000/cs. 2.09 (4.6) 1000 connectors 051115-26232 | 500/btl., 5000/cs. 5.9 (13.1) 10 btl. 051115-26115 | 25/pak, 250/cs. .45 (1.0) 10 pkgs. 05115-26238 | |
| UY2 | 100/box, 1000/cs. 0.9 (1.3) 1000 connectors 051115-26121 | 1000/box, 5000/cs. 2.8 (6.1) 5000 connectors 051115-26224 | 12/cart, 120/pak., 1200/cs. 1.4 (3.5) 1200 connectors 051115-26225 | 500/btl., 10/cs. 3.8 (8.3) 10 btl. 051115-26118 | 25/pak, 1000/cs. 1.3 (2.8) 40 pkgs. 051115-26119 | 50/pak, 1000/cs. 1.08 (2.4) 20 pkgs. 051115-26213 |
| UY2-D | N/A N/A N/A N/A | N/A N/A N/A N/A | 12/cart, 120/pak., 1200/cs. 1.4 (3.5) 1200 connectors 054007-71478 | 500/jar, 10/cs. 3.76 (8.3) 5000 connectors 051115-30059 | N/A N/A N/A N/A | |
| UY | 100/box, 1000/cs. 0.9 (1.3) 1000 connectors 051115-26214 | 1000/box, 5000/cs. 2.8 (6.1) 5000 connectors 051115-26221 | 16/cart, 160/pak., 1600/cs. 1.4 (3.5) 1600 connectors 051115-26223 | 500/btl., 5000/cs. 2.8 (6.1) 10 btl. 051115-26098 | 25/pak, 250/cs. .45 (1.0) 10 pkgs. 05115-26237 | |
| 557-TG2 | N/A N/A N/A N/A | 500/bag, 5000/box 9.09 (20) 5000 connectors 051138-57359 | N/A N/A N/A N/A | N/A N/A N/A N/A | N/A N/A N/A N/A | |
| UP2 | N/A N/A N/A N/A | 1000/box, 5000/cs. 2.4 (5.4) 5000 connectors 054007-33420 | 16/cart, 160/pak., 1600/cs. 1.4 (3.2) 1600 connectors 054007-32698 | N/A N/A N/A N/A | N/A N/A N/A N/A | |
| UP3 | 100/box, 1000/cs. 1.22 (2.7) 1000 connectors 051115-16230 | 1000/box, 5000/cs. 7.31 (13.3) 5000 connectors 054007-33419 | 10/cart, 100/pak., 1000/cs. 2.0 (4.4) 1000 connectors 054007-32700 | N/A N/A N/A N/A | N/A N/A N/A N/A | |
| UAL | 100/box, 1000/cs. 1.22 (2.7) 1000 connectors 051115-26188 | N/A N/A N/A N/A | 10/cart, 100/pak., 1000/cs. 2.1 (4.7) 1000 connectors 051115-26187 | N/A N/A N/A N/A | N/A N/A N/A N/A | |
| 211 | 100/box, 1000/cs. 1.2 (2.6) 1000 connectors 051115-26185 | N/A N/A N/A N/A | N/A N/A N/A N/A | N/A N/A N/A N/A | N/A N/A N/A N/A | |
| UB2A | 100/box, 1000/cs. 1.2 (2.6) 1000 connectors 051115-26189 | N/A N/A N/A N/A | N/A N/A N/A N/A | 500/jar, 5000/cs. 4.43 (9.78) 5000 connectors 051115-26193 | 25/pak., 1000/cs. 1.5 (3.4) 40 pkgs. 051115-26120 | |
| UB2A-D | 100/box, 1000/cs. (2.60) 1000 connectors 054007-92694 | N/A N/A N/A N/A | N/A N/A N/A N/A | N/A N/A N/A N/A | N/A N/A N/A N/A | |

Ordering Information for 3M™ Scotchlok™ Connectors

| Connector | Box Packaging Weight kg (lbs.) Min. Order UPC | Bulk Packaging Weight kg (lbs.) Min. Order UPC | Cartridge Packaging Weight kg (lbs.) Min. Order UPC | Jar Packaging Weight kg (lbs.) Min. Order UPC | Clamshell Packaging Weight kg (lbs.) Min. Order UPC | | |
|-----------------------------|---|--|---|---|--|-------------------------------|-----------------------------|
| UG | 100/box, 1000/cs. (2.50) 1000 connectors 051115-26197 | N/A N/A N/A N/A | N/A N/A N/A N/A | N/A N/A N/A N/A | N/A N/A N/A N/A | | |
| UPB | N/A N/A N/A N/A | 1000/box, 5000/cs. 3.0 (6.6) 5000 connectors 054007-33416 | N/A N/A N/A N/A | N/A N/A N/A N/A | N/A N/A N/A N/A | | |
| UDW2 | 25/bag, 100/box N/A 100 connectors 051115-19144 | N/A N/A N/A N/A | N/A N/A N/A N/A | N/A N/A N/A N/A | N/A N/A N/A N/A | | |
| U1B | 100/box, 1000/cs. (16.00) 1000 connectors 051115-22636 | N/A N/A N/A N/A | N/A N/A N/A N/A | N/A N/A N/A N/A | N/A N/A N/A N/A | | |
| U1R | 100/box, 1000/cs. (16.20) 1000 connectors 051115-22637 | N/A N/A N/A N/A | N/A N/A N/A N/A | N/A N/A N/A N/A | N/A N/A N/A N/A | | |
| UCC | N/A N/A N/A N/A | 1000/box, 5000/cs. 2.31 (5.1) 5000 connectors 051115-26194 | 16/cart, 160/pak., 1600/cs. 1.6 (3.5) 1600 connectors 051115-26195 | 500/jar, 5000/cs. 2.8 (6.1) 5000 connectors 051115-26196 | N/A N/A N/A N/A | | |
| UPC | N/A N/A N/A N/A | 1000/box, 5000/cs. 2.16 (4.76) 5000 connectors 054007-33557 | 16/cart, 160/pak., 1600/cs. 1.5 (3.0) 1600 connectors 054007-33721 | N/A N/A N/A N/A | N/A N/A N/A N/A | | |
| Tools | E-9BM Crimping | E-9C Cartridge | E-9R Crimping | E-9E Crimping | E-9Y Crimping | E-9Y-P Crimping | E-9J Crimping |
| Packaging kg (lbs.)/ cs. | 4.3 (9.5) | 1/cs. 0.91 (2) | 1/bag, 10/cs. 2.59 (5.7) | 1/bag, 10/cs. 2.7 (6) | 1/bag, 10/cs. 1.53 (3.3) | 1/pouch, 10/cs. 1.53 (3.3) | 1/bag, 10/cs. 4.1 (9.02) |
| Minimum Order | 10 each | 1 each | 10 each | 10 each | 10 each | 10 each | 10 each |
| UPC | 054007-33482 | 054007-34211 | 051138-87649 | 054007-10577 | 054007-15625 | 051115-22987 | 051115-19004-9 |

3M™ Scotchlok™ Hand Crimping Tools

To complement the 3M line of efficient, reliable Scotchlok connectors, Scotchlok crimping tools are built to do the job right, and do it fast. All Scotchlok tools are engineered to fit comfortably in the hand while providing high mechanical advantage for less operator fatigue.



3M™ Scotchlok™ Crimping Tool E-9R

3M™ Scotchlok™ Crimping Tool, E-9R

The E-9R tool features a lightweight, ergonomic, single stroke crimping action with a work-saving 10-to-1 mechanical advantage. Its innovative ratchet-release design indicates a positive crimp by automatically releasing after each successful connection. The integrated wire cutter allows the user to trim conductors prior to each connection without changing tools. The E-9R tool is compatible with all Scotchlok connectors except inline and drop wire connectors.

PKG. (lbs.): 10 each (5.70). Min. Order: 10 each. UPC: 051138-87649

3M™ Scotchlok™ Crimping Tool, E-9Y

The E-9Y tool has stepped jaws, a long nose and side wire cutter that provides crimping action for two- or three-conductor splicing. It has a mechanical advantage ratio of 3-to-1. The E-9Y tool is not recommended for 19-gauge (0.9 mm) and larger conductors.

PKG. (lbs.): 10 each (3.00). Min. Order: 10 each. UPC: 054007-15625

3M™ Scotchlok™ Crimping Tool, E-9Y-P

E-9Y tool in vinyl hanging pouch.

PKG. (lbs.): 10 each (3.00). Min. Order: 10 each. UPC: 05115-22987

3M™ Scotchlok™ Crimping Tool, E-9J

Ideal for increasing accuracy and accelerating installation and repairs, the E-9J tool offers a lightweight, single-

stroke crimping action with a work-saving 10-to-1 mechanical advantage over applied hand force.

Its ergonomic design enhances user productivity and reduces fatigue. It is compatible with all connectors except inline and drop wire connectors.

PKG. (lbs.): 10 each (3.00). Min. Order: 10 each. UPC: 05115-22987

3M™ Scotchlok™ Crimping Tool, E-9BM

This heavy-duty tool is capable of crimping all Scotchlok connectors. The E-9BM adjustable jaws allow it to handle all wire gauges and crimp 3M™ MS²™ Module bases and covers onto connector bodies. It has a mechanical advantage of 10-to-1 over applied hand force.

PKG. (lbs.): 6 each (5.80). Min. Order: 6 each. UPC: 054007-33482

3M™ Scotchlok™ Crimping Tool, E-9C

With an automatic cartridge feed, 7-to-1 mechanical advantage and ratchet action, the E-9C tool allows the craftsman to complete a crimp with one hand, freeing the other hand for wire handling. This tool is designed for 10-, 12-, and 16-connector cartridges with Scotchlok butt type connectors. One squeeze of the handle crimps the connector and ejects it, automatically advancing another connector into the crimping position.

PKG. (lbs.): 1 each (2.10). Min. Order: 1 each. UPC: 054007-34211



3M™ Scotchlok™ Crimping Tool, E-9C

3M™ Scotchlok™ Crimping Tool, E-9E

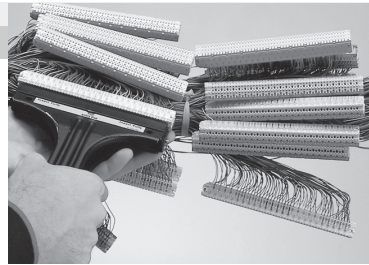
A completely parallel closing action and a 4-to-1 mechanical advantage make the lightweight E-9E crimping tool one of the most versatile additions to any craftsman's pouch. The E-9E tool will crimp all Scotchlok butt and tap connectors in all wire gauges.

PKG. (lbs.): 10 each (5.70). Min. Order: 10 each. UPC: 054007-10577

3M™ MS²™ Splicing System

MS² 25-pair splicing modules provide the efficiency of multi-pair splicing, plus the proven performance of MS² modular system splicing.

4000, 4005, and 4008 Series modules are the basic components of MS² modular system splicing. The modules are the building blocks of a systematic splicing technology that allows for reduced installation time outside or inside the plant. In addition, the MS² Splicing System helps reduce reworking demands, which saves both time and effort in construction and maintenance programs. To help make the job easier, all MS² module covers and bases are now transparent.



3M™ MS²™ Super Mate Pluggable Module 4005-DPM/TR

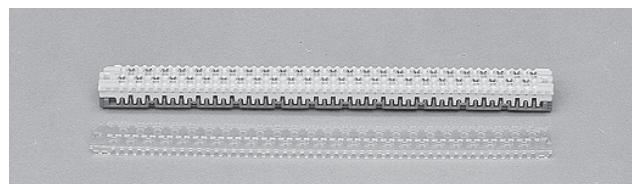
4005-DPM/TR 25-pair super mate pluggable modules help increase productivity and reduce expenses by avoiding time and cost-intensive repairs of cutting and resplicing conductors for rearrangement, addition, and removal of apparatus and stubs.

4005-DPM/TR modules plug into other super mate modules and onto the top of the 4000-D/TR or 4008-D/TR super-mini modules for bridging applications.

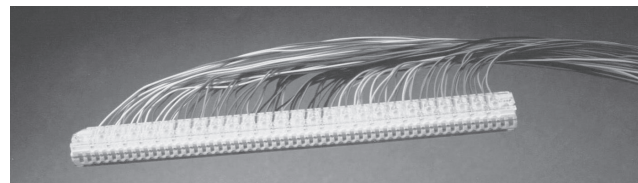
The 4005-GBM/TR modules are for bridging to encapsulated 4000-G/TR, 4005-GBM/TR or 4008-G/TR modules, as a bridge only.

The UL Listed 4005-DPM/TR is for applications requiring a flame-retardant module.

PKG. (lbs.): 120 each (7.80). Min. Order: 120 each. UPC: 054007-71370



3M™ MS²™ Super Mate Pluggable Module 4005-DPM/TR

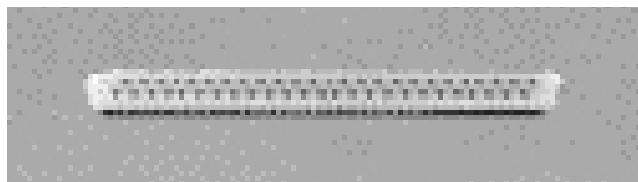


3M™ MS²™ Super-Mini Splicing Module 4000-D/TR

3M™ MS²™ Super-Mini Splicing Module 4000-G/TR

The 4000-G/TR module not only meets Cat. 5 requirements of the TIA/EIA 568B and the ISO/IEC 11801:1995 for high-speed connectors, but it also is designed to deliver in place performance withstanding extended exposure to various conditions of extremely high humidity, including water immersion, while maintaining insulation resistance and circuit integrity.

PKG. (lbs.): 120 each (8.77). Min. Order: 120 each. UPC: 051138-70906



3M™ MS²™ Super-Mini Splicing Module 4008-D/TR

3M™ MS²™ Super-Mini Module 4008-D/TR

The 25-pair super-mini modules, available dry or encapsulated, are similar to the 4000TR Series, except that the cut-off blades have been eliminated from the bottom of the modules. This allows the run of through wires to be half-tapped without cutting the conductors. The wires in the base are electrically connected, but are not cut off.

PKG. (lbs.): 120 each (6.60). Min. Order: 120 each. UPC: 054007-71372

Specifications for 3M™ MS2™ Splicing System

3M™ MS2™ 4000/4005/4008 Series Splicing Modules (Super-Mini and Super Mate)

MAXIMUM INSULATION O.D.

| | |
|-------------|--|
| Metric (mm) | 1.65 [4000G/TR has maximum insulation O.D. of 1.35 mm (0.053")] |
| Inches | 0.065 [4000G/TR has maximum insulation O.D. of 1.35 mm (0.053")] |

CABLE TYPE

| | |
|--------------------|---------|
| PIC, Pulp or Paper | |
| AWG | 22-28 |
| Metric (mm) | 0.7-0.3 |

3M™ MS2™ 4000 Series Straight Splicing Modules

| SPLICING MODULE | 4000-D/TR/24 | 4000-G/TR | 4000-D/CO | 4000-DT/TR |
|-----------------|--------------|-----------|-----------|------------|
|-----------------|--------------|-----------|-----------|------------|



MODULAR TYPE

| | | | |
|-----------------|--------------------|---------------------|----------------------|
| Dry Transparent | Gelled Transparent | Dry Flame Retardant | Dry/test Transparent |
|-----------------|--------------------|---------------------|----------------------|

COLORS

| | | | | |
|-------------|--------------------|--------------------|-------------|-------------|
| Cover | Transparent | Transparent | Gray | Transparent |
| Body top | Yellow | Yellow | Gray | Yellow |
| Body bottom | Dark Gold | Dark Gold | Gray | Dark Gold |
| Base | Transparent Smoked | Transparent Smoked | Gray Smoked | Transparent |

Sealant boxes for 4000 modules



| | | | |
|--------|-----|-----|--------|
| 4075-S | N/A | N/A | 4075-S |
|--------|-----|-----|--------|

ORDERING INFORMATION

| | | | | |
|-------------|------------------------|------------------------|------------------------|------------------------|
| Pkg. (lbs.) | 24/bag, 120/cs. (6.50) | 24/bag, 120/cs. (8.70) | 24/bag, 120/cs. (6.40) | 24/bag, 120/cs. (6.30) |
| Min. Order | 120 each | 120 each | 120 each | 120 each |
| UPC | 051138-57525 | 051138-70906 | 054007-30944 | 054007-71368 |

3M™ MS2™ Pluggable/Bridge Splicing Modules 4005 Series

| SPLICING MODULE | 4005-DPM/TR | 4005-GBM/TR | 4005-DPM/FR | 4005-DBM/TR/NB | 4005-GBM/TR/NB |
|-----------------|-------------|-------------|-------------|----------------|----------------|
|-----------------|-------------|-------------|-------------|----------------|----------------|

MODULE TYPE

| | | | | |
|------------------------|---------------------------|----------------------------|---------------------|------------------------------------|
| Dry Bridge Transparent | Gelled Bridge Transparent | Dry Bridge Flame Retardant | Dry Bridge No Blade | Gelled Bridge Transparent No Blade |
|------------------------|---------------------------|----------------------------|---------------------|------------------------------------|

COLORS

| | | | | | |
|-------------|-------------|-------------|-----------|-------------|-------------|
| Cover | Transparent | Transparent | Gray | Transparent | Transparent |
| Body top | Yellow | Blue | Gray | Yellow | Yellow |
| Body bottom | Blue | Blue | Dark Blue | Blue | Blue |
| Insulator | Red | Red | Maroon | Red | Red |

ORDERING INFORMATION

| | | | | | |
|-------------|------------------------|-------------------------|------------------------|------------------------|-------------------------|
| Pkg. (lbs.) | 24/bag, 120/cs. (7.80) | 24/bag, 120/cs. (11.30) | 24/bag, 120/cs. (7.80) | 24/bag, 120/cs. (7.80) | 24/bag, 120/cs. (10.25) |
| Min. Order | 120 each | 120 each | 120 each | 120 each | 120 each |
| UPC | 054007-71370 | 051115-15064 | 054007-17352 | 054007-92318 | 051115-16181 |

Note: 4077-A protects one 4005-DPM Module, 4077-B protects one 4000-D and one 4005-DPM Module, 4077-C protects two 4005-DPM Modules, 4077-D protects three 4005-DPM Modules.

3M™ SLiC™ Aerial Closures and Terminals

3M™ SLiC™ Aerial Closures

The single-piece aerial closure is easily installed in construction or maintenance situations. The one-piece construction permits complete splice access after placement without removal of the closure or bonding from the cables. The closures are free-breathing and suitable for straight, butt, and branch splices of non-pressurized communication cables.

The closure's double-wall molded polyethylene construction will resist cracking or breaking even in the harshest environment. All components are attached to the closure; there are no loose parts.

Because of its interlocking ends, the SLiC aerial closure can expand to meet any size sheath opening without special kits, virtually eliminating excess inventory. The 2.6 x 29, 3.6 x 33, 5.6 x 33, and 7.6 x 33 closures can be extended



3M™ SLiC™ Aerial Closure

while maintaining their initial strength. The SLiC aerial closure does not require taping, bricking or any special labor-intensive practices. The end seals have a snug fit on cables and virtually eliminate the need for a drip collar. Sealing collars or tape are not required.

The 2-, 3-, 5-, 7 and 9-inch diameter closures feature a universal end seal to handle any plant configuration. Seven sizes accommodate splice openings from 254 to 635 mm (10 to 25 inches). RUS Listed.

3M™ SLiC™ AERIAL CLOSURES

| FEATURES | BENEFITS |
|--|---|
| One piece construction | Provides easy installation; no loose parts |
| Double walled, molded construction | Resists breaking or cracking |
| Interlocking ends | Extendible for long sheath openings |
| Hanger/bonding system | No external or additional bonding material required |
| Quick release latch | Easy re-entry |
| Attached sheath retention (SR) bracket (only for rigid bond) | Protects cable sheath pull-out or movement |
| Rubber and spiral end seal | One size fits multiple cable configurations |

Specifications for 3M™ SLiC™ Aerial Closures

| | SLiC 2.2 x 19 mm (in.) | SLiC 2.6 x 29 mm (in.) | SLiC 3.6 x 19 mm (in.) | SLiC 3.6 x 33 mm (in.) | SLiC 5.6 x 33 mm (in.) | SLiC 7.6 x 33 mm (in.) | SLiC 9.6 x 36 mm (in.) |
|--------------------------------------|--|--|--|---|-------------------------------|-------------------------------|-------------------------------|
| Max. splice opening | 356 mm (14") | 432 mm (17") | 356 mm (14") | 533 mm (21") | 533 mm (21") | 533 mm (21") | 635 mm (25") |
| Max. bundle diameter | 55.9 mm (2.2") | 66 mm (2.6") | 91.4 mm (3.6") | 91.4 mm (3.6") | 142.2 mm (5.6") | 193.0 mm (7.6") | 244 mm (9.6") |
| Approx. cable range pair count | 100-pair (26 or 24 AWG) 0.4 or 0.5 | 200-pair** (26 or 24 AWG) 0.4 or 0.5 | 200-pair (26 or 24 AWG) 0.4 or 0.5 | 400-pair* (26 or 24 AWG) 0.4 or 0.5 | 1200-pair* (26 AWG) 0.4 | 2400-pair* (26 AWG) 0.4 | 3600-pair* (26 AWG) 0.4 |
| Spiral End Seal Port Capacity | | | | | | | |
| End seal dia. port #1 | 20-41 mm (0.8-1.6") | 20-41 mm (0.8-1.6") | 20-66 mm (0.8-2.6") | 20-66 mm (0.8-2.6") | 30-76 mm (1.2-3.0") | 38-97 mm (1.5-3.8") | 38-97 mm (1.5-3.8") |
| End seal dia. port #2 | 13-25 mm (0.5-1.0") | 13-25 mm (0.5-1.0") | 13-25 mm (0.5-1.0") | 13-25 mm (0.5-1.0") | 20-36 mm (0.8-1.4") | 30-46 mm (1.2-1.8") | 30-46 mm (1.2-1.8") |
| End seal dia. port #3 | 13-25 mm (0.5-1.0") | 13-25 mm (0.5-1.0") | 13-25 mm (0.5-1.0") | 13-25 mm (0.5-1.0") | 36-51 mm (1.4-2.0") | 13-30 mm (0.5-1.2") | 13-30 mm (0.5-1.2") |
| End seal dia. port #4 | N/A | N/A | N/A | N/A | 13-30 mm (0.5-1.2") | 46-61 mm (1.8-2.4") | 46-61 mm (1.8-2.4") |
| End seal dia. port #5 | N/A | N/A | N/A | N/A | N/A | 13-30 mm (0.5-1.2") | 13-30 mm (0.5-1.2") |
| Rubber End Seal Port Capacity | | | | | | | |
| 1 Port end seal dia. port #1 | 5-41 mm (0.2-1.6") | 5-41 mm (0.2-1.6") | 5-66 mm (0.2-2.6") | 5-66 mm (0.2-2.6") | N/A | N/A | N/A |
| 2 Port end seal dia. port #1 | 5-25 mm (0.2-1.0") | 5-25 mm (0.2-1.0") | 5-51 mm (0.2-2.0") | 5-51 mm (0.2-2.0") | 20-56 mm (0.8-2.2") | 41-81 mm (1.6-3.2") | 41-81 mm (1.6-3.2") |
| 2 Port end seal dia. port #2 | 5-15 mm (0.2-0.6") | 5-15 mm (0.2-0.6") | 5-15 mm (0.2-0.6") | 5-15 mm (0.2-0.6") | 5-56 mm (0.2-2.2") | 5-81 mm (0.2-3.2") | 5-81 mm (0.2-3.2") |
| 3 Port end seal dia. port #1 | N/A | N/A | 5-41 mm (0.2-1.6") | 5-41 mm (0.2-1.6") | 15-56 mm (0.6-2.2") | 36-97 mm (1.4-3.8") | 36-97 mm (1.4-3.8") |
| 3 Port end seal dia. port #2 | N/A | N/A | 5-25 mm (0.2-1.0") | 5-25 mm (0.2-1.0") | 5-36 mm (0.2-1.4") | 15-46 mm (0.6-1.8") | 15-46 mm (0.6-1.8") |
| 3 Port end seal dia. port #3 | N/A | N/A | 5-25 mm (0.2-1.0") | 5-25 mm (0.2-1.0") | 5-36 mm (0.2-1.4") | 15-46 mm (0.6-1.8") | 15-46 mm (0.6-1.8") |

*Based on 2-bank straight splice using 25-pair modular connectors.

**Based on more than one cable.

Ordering Information for 3M™ SLiC™ Aerial Closures with Floating Bond

| Product Number | Contains | Pkg. (lbs.) | Min. Order | UPC (054007-) |
|---|-----------------|---------------|------------|---------------|
| SLiC Aerial Closure Kit with Spiral End Seal | | | | |
| SLiC 2.2" x 19"-SES | Spiral end seal | 1/cs. (2.30) | 1 kit | 92600 |
| SLiC 2.6" x 29"-SES | Spiral end seal | 1/cs. (3.70) | 1 kit | 92601 |
| SLiC 3.6" x 19"-SES | Spiral end seal | 1/cs. (4.40) | 1 kit | 75544* |
| SLiC 3.6" x 33"-SES | Spiral end seal | 1/cs. (5.30) | 1 kit | 92602 |
| SLiC 5.6" x 33"-SES | Spiral end seal | 1/cs. (8.30) | 1 kit | 92603 |
| SLiC 7.6" x 33"-SES | Spiral end seal | 1/cs. (11.10) | 1 kit | 92604 |
| SLiC 9.6" x 36"-SES | Spiral end seal | 1/cs. (16.50) | 1 kit | 92605 |

*UPC prefix 051138-

3M™ SLiC™ Aerial Terminal with Spiral/Rubber End Seal

SLiC Aerial Terminals with Spiral/Rubber End Seal are distribution terminals and closures contained within a lightweight, double-wall molded-plastic housing designed for fixed-count termination of aerial drop wires. Special block configurations required by the individual customer are also available and may be completed either at the factory or by the customer.

End seals of the SLiC terminal are designed to provide proper sizing and a snug fit around the cable sheath. This virtually eliminates the need for drip collars to prohibit water from entering the splice chamber. The SLiC terminal with rubber end seal comes packaged with single-port end seals; however, customers may use double-port or triple-port end seals as their applications require. The SLiC terminal with spiral end seal comes packaged with three-port end seals.



3M SLiC AERIAL TERMINAL WITH SPIRAL/RUBBER END SEAL

| FEATURES | BENEFITS |
|--|---|
| Two-closure-in-one housing design | Separates splice and drop chamber |
| One piece construction | Easy installation |
| Self-healing drop wire ports | Minimizes weather and insect problems |
| Sleeves extend in either or both directions | Eliminates need for separate rehabilitation and distribution splices; accommodates long sheath openings |
| Accommodates a variety of terminating blocks | Adaptable to user requirements |
| Multiple distribution counts | Counts range in multiples of 5, from 5 to 50 |
| Rubber and spiral end seal | One size fits multiple cable configurations |

Ordering Information for 3M™ SLiC™ Aerial Terminals Filled

| Product Number | Block Type | Initial Pair Capacity | Pkg. (lbs.) | Min. Order | UPC (051138-) |
|---|------------|-----------------------|----------------|------------|---------------|
| Filled Terminals with Spiral End Seals | | | | | |
| 328-PI-10-TR/SES | ATS/DC | 10 | 4 each (30.00) | 4 each | 58546 |
| 328-PI-25-TR/SES | ATS/DC | 25 | 4 each (34.00) | 4 each | 58548 |
| 530-PI-10-TR/SES | ATS/DC | 10 | 1 each (10.80) | 1 each | 58777 |
| 530-PI-25-TR/SES | ATS/DC | 25 | 1 each (12.86) | 1 each | 58779 |
| 319-PI-PO/TR/SES | ATS/DC | 10 | 4 each (?) | 4 each | 19474 |

3M™ Better Buried Closures

The buried compound compression closure method forces the encapsulant up the cable core to stop water ingress. The product is simple to install, comes with the spacer web and plastic wrap and is used to hold and force the encapsulant. The product is offered in different sizes to cover various cable ranges and can be easily extended and bricked.

Better buried closures use a gravity fill method of encapsulating and protecting the cable splice. Kits listed below are simple to install and are offered with a full product offering to cover the complete cable ranges found



3M™ Better Buried Closure

in the outside plant. In addition, kits come with 3M™ High Gel Reenterable Encapsulant 8882 as well as the following materials.

Ordering Information for 3M™ Better Buried Closure Complete Kits

| Product Number | Pkg. (lbs.) | Min. Order | UPC 051138- |
|----------------------|---------------|------------|-------------|
| BB2x12/8882/High Gel | 1 kit (3.20) | 1 kit | 36502 |
| BB2x24/8882/High Gel | 1 kit (5.80) | 1 kit | 36503 |
| BB3x24/8882/High Gel | 1 kit (13.00) | 1 kit | 36504 |
| BB4x24/8882/High Gel | 1 kit (19.00) | 1 kit | 36505 |
| BB5x26/8882/High Gel | 1 kit (28.80) | 1 kit | 36506 |

Kit contents include:

- Closure Body
- End Cap, Single (SC)
- End Cap, Multiple (DC) (TC)
- Spacer Web (SW)
- Strain Relief Bar (SB)
- Hose Clamps, Closure
- Hose Clamps, Strain Bar
- Funnel
- Snap-In Cap
- Locking "H"
- Foam Strips
- 3M™ Scotchlok™ Shield Connectors
- Encapsulating Compound (8882 re-enterable)
- 3M™ Scotchcast™ Spacer Web 4430 (for re-entry only)
- Sheath Scuff Material
- 3M™ Pair Saver
- 3M™ Scotchcast™ Strain Relief Bar Kits 4465 or 4465-L
- Moisture Resistant Splicing Connector
- Better Buried End Caps (bulk)
- Better Buried Sleeve Kits (closure extension)
- Hose Clamps
- Vinyl Tape
- DR Tape
- Scotch® Linerless Rubber Splicing Tape 130C
- B Sealing Tape
- Bonding Braid

3M™ Scotchcast™ PIC Encapsulating Closure Kits (Non-Reenterable)

3M™ SLiC™ 5-Pair Buried Service Wire Kit

Protecting a buried service wire splice is now easier than ever with the SLiC Buried Service Wire (BSW) Kit. The BSW kit is a three-part, rigid body closure that self-encapsulates two- and five-pair buried service wire. It has a built-in bonding system that bonds the buried service wire shield as the splice is put together—and it contains a unique sealant.

The special formulated sealant is a one-part, no-mix, non-urethane product containing no grease. The sealant serves as an electrical insulator and reacts upon moisture contact to prevent water ingress. At the point of water incursion, the sealant hardens and forms a water-resistant barrier.

Pkg. (lbs.): 12 kits (5.50). Min. Order: 12 kits. UPC: 054007-71531



3M™ SLiC™ 5-Pair Buried Service Wire Kit

3M™ Buried Service Wire Splice Kit 3832

The 3832 buried service wire splice kit will accommodate inline and butt splices of up to five-pair filled or unfilled service wire. One “A” size bag of 3M™ Scotchcast™ Encapsulating Compound 4403 and a split bolt are provided with the kit. Once the compound has been poured, an outer tube is rotated over the barrel opening to seal the unit, requiring no waiting for the compound to cure before the kit is buried.

Pkg. (lbs.): 12 kits (4.70). Min. Order: 12 kits. UPC: 054007-32224



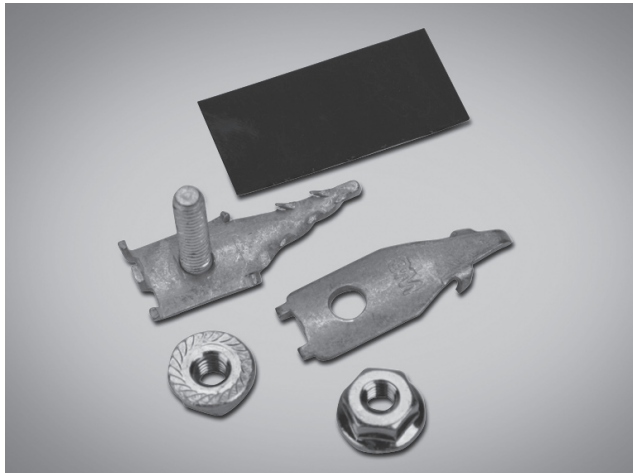
3M™ Buried Service Wire Splice Kit 3832

3M™ Scotchlok™ Shield Bonding Products

3M™ Scotchlok™ Shield Bond Connector 4460-DS

The 4460-DS connector is similar to 4460-D shield connector and is supplied with a small piece of pair saver to aid connector insertion and to protect conductors. This connector is suitable for a cable size of 100 pair or less.

Pkg. (lbs.): 100 each (3.60). Min. Order: 100 each. UPC: 054007-71217

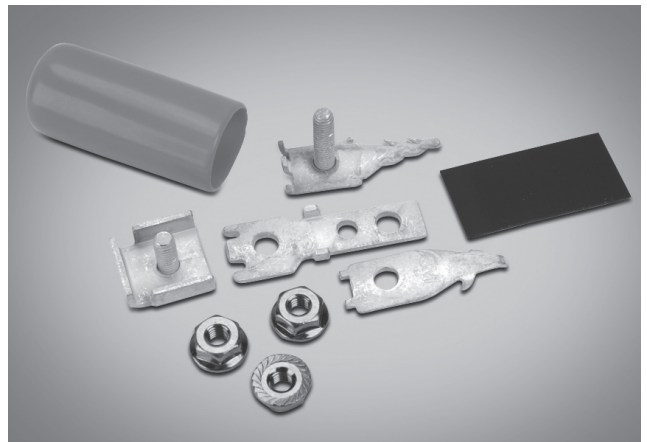


3M™ Scotchlok™ Shield Bond Connector 4460-DS

3M™ Scotchlok™ Shield Bond Connector Assembly 4460-D/FO

The 4460-D/FO shield bond connector is specifically designed to meet the bonding needs of fiber optic cables that contain metallic or fiberglass strength members. The connector is a version of the 4460-D connector assembly which utilizes two additional plates to capture and secure the strength members. Its current-carrying capacity is equal to or better than aluminum-shielded fiber optic cable and can be used on all cables with 20,3 mm (0.8") or smaller O.D.

Pkg. (lbs.): 100 each (7.95). Min. Order: 100 each. UPC: 054007-92757



3M™ Scotchlok™ Shield Bond Connector Assembly 4460-D/FO

3M™ Armorcast Sheath Repair Products

3M™ Armorcast Structural Material Bulk 4560

Armorcast structural material is a flexible fiberglass knit fabric strip saturated with black resin syrup. No heat is required in the installation process, just water. It forms a tough durable covering that cures in just 20 minutes. For use on pressurized, non-pressurized, polyethylene or lead sheathed cable.

Product Number: 4560-5 (Bulk, 1.5 m (5')). Pkg. (lbs.): 5 rolls (2.00.)
Min. Order: 5 rolls. UPC: 051138-57719



3M™ Fibrlok™ Single Fiber Optical Splicing System 2500 Series

3M™ Fibrlok™ II Universal Optical Fiber Splice 2529

The 2529 optical fiber splice has successfully spliced any combination of 250µm and 900µm singlemode or multimode fibers for over 15 years. Utilizing the rugged, low cost 2501 assembly tool, the 2529 can be installed for any indoor or outdoor application.



3M™ Fibrlok™ II Universal Optical Fiber Splice 2529

3M™ Fibrlok™ 250µm Fiber Optic Splice 2540G

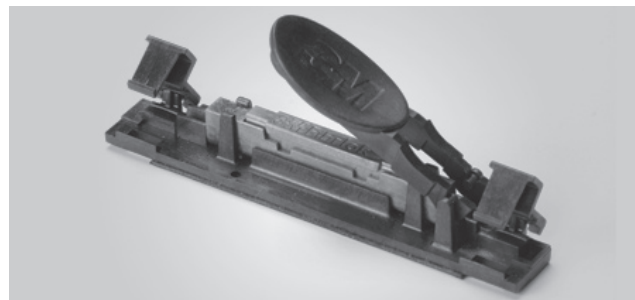
The 2540G splice provides fast, easy splicing of 250µm singlemode and multimode fiber for all splice installations, including fiber-to-the-premises. The small, rugged 3M™ Fibrlok™ 250µm Splice Assembly Tool 2504G can be installed in any environment whether it is an aerial application or inside a building.



3M™ Fibrlok™ 250µm Fiber Optic Splice 2540G

3M™ Fibrlok™ II Splice/Holder 2539

The 2539 integrates the 3M Fibrlok II Splice 2529, actuation tool, and holder all in one package. It provides fast, on-site installation without a separate assembly tool or splice tray. Very high bond tape on the bottom of the splice/holder permanently holds it at the splice location. The Fibrlok II splice/holder is also available with a pre-terminated SC/APC or SC/UPC pigtail for easy installation.



3M™ Fibrlok™ II Splice/Holder 2539

3M FIBRLOK SINGLE FIBER OPTICAL SPLICING SYSTEM 2500 SERIES

| FEATURES | BENEFITS |
|------------------------------|--|
| < 0.1dB insertion loss | High performance, permanent splices |
| 30 second installation time | Increased productivity |
| Minimum tooling requirements | Low capital cost |
| No electricity required | Easy on-site installation |
| Simple, easy to use | Minimal training, lower installed cost |
| Strong fiber retention | Long-term reliability |

Specifications for 3M™ Fibrlok™ Single Fiber Optical Splices

| | 2529 | 2539 | 2540G |
|-----------------------|--|--|---|
| Dimensions | 3.8 mm x 6.4 mm x 38.1 mm (0.15" x 0.25" x 1.50") | 12.9 mm x 12.0 mm x 66.0 mm (0.51" x 0.47" x 2.60") | 4 mm x 4 mm x 36 mm (0.16" x 0.16" x 1.42") |
| Fiber Diameter | 125µm | 125µm | 125µm |
| Coating Diameter | 250 or 900µm | 250 or 900µm Tight Buffer | 250µm |
| Installation Time | < 30 seconds after fiber preparation | < 30 seconds after fiber preparation | < 30 seconds after fiber preparation |
| Mean Insertion Loss | < 0.1dB | < 0.1dB | < 0.1dB |
| Return Loss | < -40dB Typical | < -40dB Typical | < -40dB Typical |
| Tensile Strength | 4.4N (1.0 lbf) Minimum | 4.4N (1.0 lbf) Minimum | 4.4N (1.0 lbf) Minimum |
| Operating Temperature | -40°C to 75°C (-40°F to 167°F) | -40°C to 75°C (-40°F to 167°F) | -40°C to 75°C (-40°F to 167°F) |
| Material | Engineering thermoplastic with aluminum alloy element and index matching gel | Engineering thermoplastic with aluminum alloy element, index matching gel and VHB tape | Engineering thermoplastic with aluminium alloy element and index matching gel |

Ordering Information for 3M Fibrlok Single Fiber Optical Splices

| Product Number | Description | Pkg. | Min. Order | UPC 054007- |
|-----------------------|---|-------------------|------------|-------------|
| Splices | | | | |
| 2529 | Fibrlok II universal optical fiber splice for 250 and 900µm fiber | 6/pkg, 10 pkg/cs. | 60 each | 92202 |
| 2529-K | 2529 Fibrlok II splices with assembly tool (60 splices, one 2501 assembly tool) | 1 kit/cs. | 1 kit | 92415 |
| 2539 | 2529 Fibrlok II splice, integrated actuation tool, and holder with tape | 1/pkg, 60 pkg/cs. | 60 each | 21516* |
| 2539 SC/APC | 2539 Fibrlok II splice/holder with 0.75 m (30") SC/APC connector pigtail | 1/pkg, 12 pkg/cs. | 12 each | 22860* |
| 2539 SC/UPC | 2539 Fibrlok II splice/holder with 0.75 m (30") SC/UPC connector pigtail | 1/pkg, 12 pkg/cs. | 12 each | 22861* |
| 2540G | Fibrlok 250µm fiber splice for 250µm fiber | 5/pkg, 12 pkg/cs. | 60 each | 22685* |
| Assembly Tools | | | | |
| 2501 | Required for Fibrlok II 2529 | 1/cs. | 1 each | 57125 |
| 2504G | Required for Fibrlok 250µm 2540G | 1/cs. | 1 each | 22686* |

*UPC prefix 051115-

3M™ Fibrlok™ Splice Preparation Kit with Cleaver 2559-C

The Fibrlok splice kits are available with (2559-C) and without (2559) a 3M™ Fibrlok™ Fiber Cleaver 2534 and contain all the materials needed to terminate Fibrlok splices whether it's a singlemode or multimode splice. Detailed instructions are provided. Also included in the kits are the Fibrlok II assembly tool 2501 and Fibrlok 250µm assembly tool 2504G, simple-to-use tools designed for fast and easy installation.

Fibrlok splice kit with cleaver 2559-C contains the following components:

- Fibrlok II 2529 Splice Assembly Tool 2501
- Fibrlok 250µm Assembly Tool 2504G
- Fiber Cleaver 2534 (not included in 2559 kit)
- Fiber Stripping Tool 6365-ST
- Kevlar Snips 6365-KS (scissors)
- Lint free cloths (100/pkg.)
- Cleaning alcohol bottle
- Fibrlok II Splice 2529 (6 each)
- Fibrlok 250µm Splice 2540G (5 each)
- Fibrlok II Splice/Holder 2539 (2 each)



3M™ Fibrlok™ Splice Preparation Kit 2559-C with 3M™ Fibrlok™ Fiber Cleaver 2534

Ordering Information for 3M™ Fibrlok™ Splice Kits and Accessories

| Product Number | Description | PKG. | Min. Order | UPC 051115- |
|---|--|-------|------------|-------------|
| Kits | | | | |
| 2559-C | Fibrlok splice kit with fiber cleaver | 1/cs. | 1 each | 25801 |
| 2559 | Fibrlok splice kit without fiber cleaver | 1/cs. | 1 each | 25800 |
| Replacements for 3M Fibrlok Splice Kit | | | | |
| 2501 | Required for Fibrlok II 2529 | 1/cs. | 1 each | 57125* |
| 2504G | Required for Fibrlok 250µm 2540G | 1/cs. | 1 each | 22686 |
| 2534 | Fiber cleaver | 1/cs. | 1 each | 25802 |
| *UPC prefix 054007- | | | | |

3M™ Fiber Optic Splice Closure 2178 Series and Accessories

3M™ Fiber Optic Splice Closure 2178 Series

The 3M™ Fiber Optic Splice Closure 2178 Family has earned its reputation for reliable protection of fiber optic facilities. Now, the 2178 family includes new models and configurations for more flexibility to meet the complex needs of today's fiber optic networks. You want to build reliable FTTP networks faster and cheaper. But as more fiber is deployed in the distribution network, a wider variety of environmental conditions are encountered. Preserving the integrity of fiber optic facilities is essential, regardless of environmental conditions. The expanded 2178 family of fiber optic splice closures can meet these needs for all applications (including aerial, buried, underground, vault and building entrance) and cables (including loose buffer tube, central tube, discrete fiber, ribbon fiber, armored or dielectric).

Multiple Solutions for Evolving Networks

The 3M™ Fiber Optic Splice Closure 2178 Family provides multiple real-world solutions with five key aspects:

1. A Complete Product Family

The 2178 family now includes five distinct models (XSB, S, LS, LL and XL) in both flame retardant and non-flame retardant versions, each with flexibility built in for growing networks.

2. Future-Proof Solutions

The 2178 family has scalability and flexibility, allowing you to expand the system based on splicing capacity and the number of cable entry ports. It also allows you to defer your investment until it is required.



3M™ Fiber Optic Splice Closure 2178 Family

3. Easily Re-enterable Designs

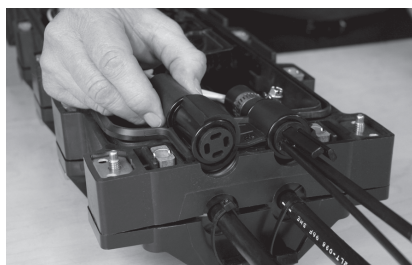
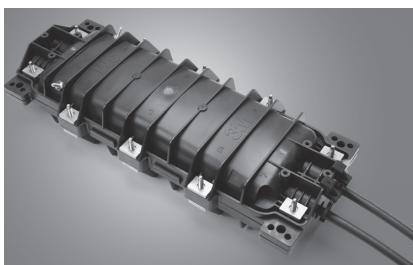
A reusable gasket makes re-entry easy, while bolted halves provide greater security than that of dome type closures. With the 2178 family, you can re-enter, reconfigure and add or remove cables in all outside plant and inside plant environments.

4. Flexible Environmental Applications

The 2178 family can be effectively used in nearly any environment including aerial (pole and strand) mount, central office vault, manhole, pedestal and handhole. It can also accommodate all splicing methods (mechanical and fusion) as well as inline and butt splicing configurations.

5. Network Flexibility

3M designs a variety of sizes, materials (flame retardant vs. non flame retardant) and configuration options so that our fiber optic splice closures can be used in every segment of the network. A single product family that meets a range of needs.



Flexibility That Can Save You Time and Money

The 3M™ Fiber Optic Splice Closure 2178 Family provides excellent system flexibility for both existing and new fiber deployments. Products in the 2178 family are industry-proven and comply with appropriate UL and Telcordia standards. The flexible design and common accessories allow you to maintain a reduced inventory, saving time and money.



3M™ Fiber Optic Splice Closure 2178-S

Smart Design Makes Your Job Easier

All 2178 closures are designed to be easy to install, easy to use and easy to re-enter. The reusable gasket makes re-entry as easy as any other system with almost no training necessary. The 2178 family accommodates all splicing configurations (inline or butt). All of the closures

in the 2178 family feature tough, rigid non-filled closures tested under harsh, real-world situations to stand up to severe conditions of moisture, vibration and temperature extremes.

New Features to Meet New Demands

The closures accommodate cables of varying sizes and provide flexibility to add ports on both ends with the cable addition kit. Two additions to the system (the cable addition kit and grommets) make system expansion even easier than before. A flexible tray system allows positionable or fixed splice inserts. Technicians can re-enter and swap out splice holders, and mix and match splice types (fusion and mechanical). The same tray can be used for discrete or mass splicing. All of these features combine to give you an enhanced ability to offer optimum bandwidth for triple play services of voice, data and video.



3M™ Fiber Optic Splice Closure 2178-XSB

3M™ FIBER OPTIC SPLICE CLOSURE 2178 SERIES

| FEATURES | BENEFITS |
|---|---|
| Full range of sizes | Fits your specific application |
| No special tools required | Easy installation and re-entry |
| Constructed of a highly chemical-resistant material | Can be deployed in all environments: buried, underground and aerial |
| Gasket seals | Reusable for easy re-entry |
| Unique strength member clamp assembly | Prevents cable sheath movement with temperature changes |
| Spacious fiber management areas | All closures provide separate areas for routing, protecting and expressing buffer tubes and ribbon fibers |
| Flexible drop or cable addition | Multiport grommets provide entry for drops or cables |
| Flame-retardant materials | All 2178 closures are available in a flame-retardant model, giving you even more application choices |

Reliable Protection for Your Application

The 3M™ Fiber Optic Splice Closure 2178 Family provides secure protection for a broad range of fiber cables. The 2178 family is engineered to meet specific needs and field conditions, with different sizes to accommodate varying splice counts.

All 2178 closures are made of a tough chemical-resistant material and have a new gasket seal making them ideal for a wide variety of applications.



3M™ Fiber Optic Splice Closure 2178-LS

Ordering Information for 3M™ Fiber Optic Splice Closure 2178 Family

| Product Number | Size in. (mm) | Splice Configuration | Cable Entry Ports | Maximum splice capacity | Pkg. | Min. Order | UPC 051138- |
|----------------|--|----------------------|--------------------|--------------------------------------|------------------------|------------|-------------|
| 2178-XSB | 14.6" x 10.1" x 4.6" (369.8 mm x 256.5 mm x 117.3 mm) | Butt | 3 Butt | 48 Single Fusion 144 Mass Fusion | 1 each (9.00 lbs.) | 1 each | 16219 |
| 2178-S | 21.9" x 8.5" x 4.7" (556.3 mm x 215.9 mm x 119.4 mm) | Inline Butt | 4 Inline 2 Butt | 96 Single Fusion 288 Mass Fusion | 1 each (12.00 lbs.) | 1 each | 57777 |
| 2178-LS | 21.9" x 8.5" x 8.0" (556.3 mm x 215.9 mm x 203.2 mm) | Inline Butt | 4 Inline 2 Butt | 288 Single Fusion 864 Mass Fusion | 1 each (14.00 lbs.) | 1 each | 57778 |

Ordering Information for 3M™ Fiber Optic Splice Closure 2178 Family Configurations

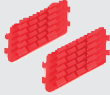





| Product Number | Description | Cable Entry Ports | | | Trays | | Ground Lugs | Flame Retardant | UPC 051138- |
|----------------|---|-------------------|------|-----|-------|-----|-------------|-----------------|-------------|
| | | Inline | Butt | MPG | Type | Qty | | | |
| 2178-XSB-EG-1T | Butt splice closure, GND (2 lugs), 1 2532 tray | 0 | 3 | 0 | 2532 | 1 | 2 | - | 19026* |
| 2178-S | Butt/inline splice closure, GND (2 lugs), no tray | 4 | 2 | 0 | N/A | 0 | 2 | - | 57777 |
| 2178-LS | Butt/inline splice closure, GND (2 lugs), no tray | 4 | 2 | 0 | N/A | 0 | 2 | - | 57778 |

*UPC prefix 051115-

Specifications for 3M™ Fiber Optic Splice Closure 2178 Family

| Product Configuration | Cable Entry Ports per Splicing Configuration | | | | | Size |
|-----------------------|--|--------|--------|--------|--|------------------|
| | Butt | | Inline | | | |
| | Main | Branch | Main | Branch | | |
| 2178-S | 2 | 0 | 2 | 2 | | 1.0" |
| 2178-LS | 2 | 0 | 2 | 2 | | 1.0" |
| 2178-XSB | 2 | 1 | - | - | | 2-1.0" 1-1.4" |

Accessories for 3M™ Fiber Optic Splice Closure 2178

| | Product Number/ Packaging Information | Product Description |
|---|---|--|
| SPLICE TRAYS | | |
|  | 2521-F Pkg. (lbs.): 12 pkgs. (0.55) Min. Order: 12 pkgs. UPC: 051138-36412 | 3M™ Fusion Splice Insert 2521-F, 2 Pack Holds 12 single fusion splices in each insert, used in 3M™ Fiber Splice Organizer Trays 2538/2522/2523. 3.0 mm x 60 mm single fusion heat shrink sleeve required. |
|  | 2521-FL Pkg. (lbs.): 12 pkgs. (0.40) Min. Order: 12 pkgs. UPC: 051138-36413 | 3M™ Fibrlok™ Splice Insert 2521-FL, 2 Pack Holds six Fibrlok or mass fusion splices in each insert, used in 2538/2522/2523 trays. Accommodates single ceramic rod, 12-fiber mass fusion sleeves or double ceramic rod, 4- to 6-fiber mass fusion sleeves. |
|  | 2523 Pkg. (lbs.): 2 each (2.67) Min. Order: 2 each UPC: 051138-36523 | 3M™ Large Fiber Splice Organizer Tray 2523 Holds four 2521 family splice inserts.* The 2523 tray stores and protects discrete and mass, mechanical and fusion splices. The 2521 inserts are easily added to secure splices into the trays. Fibers are routed into the trays using 2520 tubing that zips over the fibers. *Splice inserts must be ordered separately. |
|  | 2524 Pkg. (lbs.): 2 each (1.87) Min. Order: 2 each UPC: 051138-11514 | 3M™ Fibrlok™ Splice Organizer Tray 2524 Holds 24 3M™ Fibrlok™ Splices and eight buffer tubes. The 3M™ Fibrlok™ Splice Organizer Tray 2524 holds 24 Fibrlok splices. The 2524 tray can be adapted for fusion splice storage using the 2524F insert. Buffer tubes are secured with channel snaps so that cable ties are not required. The fibers all enter the tray in one corner eliminating the need for figure 8's in the fiber. An important design feature of these stackable trays is the snap-on hinge cover on each tray. Individual trays may be accessed without disassembly of the trays above or below — and without kinking buffer tubes. |
| EXPANSION | | |
|  | 2181-LS Pkg. (lbs.): 1 each (8.30) Min. Order: 1 each UPC: 051138-57927 | 3M™ Cable Addition Kit 2181-LS Contains gasket and materials for installing additional cables. For use with 2178-L/S family closures. |
| 2178 CLASSIC | | |
|  | 2181 Pkg. (lbs.): 1 each (14.00) Min. Order: 1 each UPC: 051138-89321 | 3M™ Cable Addition Kit 2181 Contains mastic, cable adapter and materials for installing additional cables in 2178 and 2178-G splice closures. This kit permits butt splicing after initial plant construction. Contents: cover, cable adapter, three plugs, four hose clamps, four green cable ties, four blue cable ties, one spacer clamp assembly, one box sealing cord, one box sealing tape, 10 bolts and eight sealing washer trees. For use only with 2178 classic. |

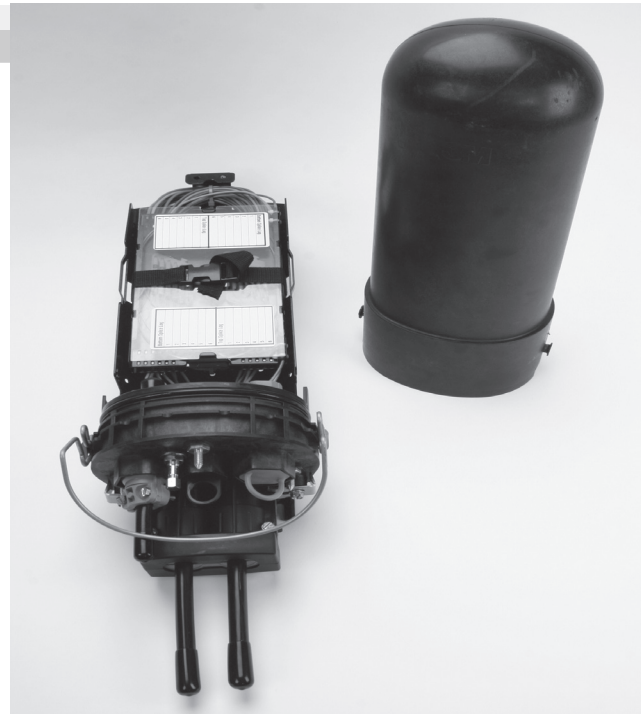
3M™ Fiber Dome Closure FDC 08 and FDT 08

The new compact 3M™ Fiber Dome Closures FDC 08 and FDT 08 are hermetically sealed fiber dome closures for aerial, buried above-grade, and buried below-grade applications. These closures meet the needs of most carriers using fiber optic splice closures in the long haul, metro, local access (DSL, HFC, mobile wireless backhaul) and FTTP feeder and distribution networks. They are designed for butt splicing applications of single or ribbon fiber.

These compact closures require no special tools, which can reduce tooling costs and allows for ease of installation and re-entry into the closure.

The closures feature a fixed O-ring sealing system along with an innovative latching mechanism. This combination provides for simple, error-free closure sealing and re-entry.

The fiber dome closure utilizes the 3M™ External Cable Assembly Module (ECAM) built-in cable entry port system. The ECAM design allows true plug-and-play capability, which may reduce installation and labor costs because the cable preparation and installation are completed outside



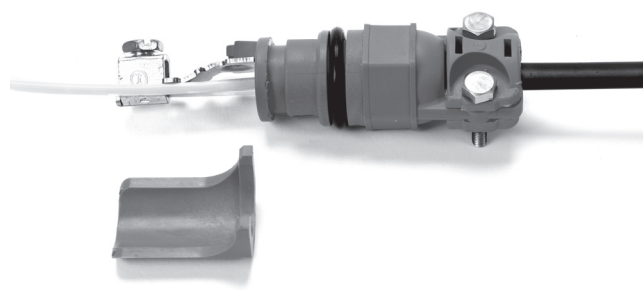
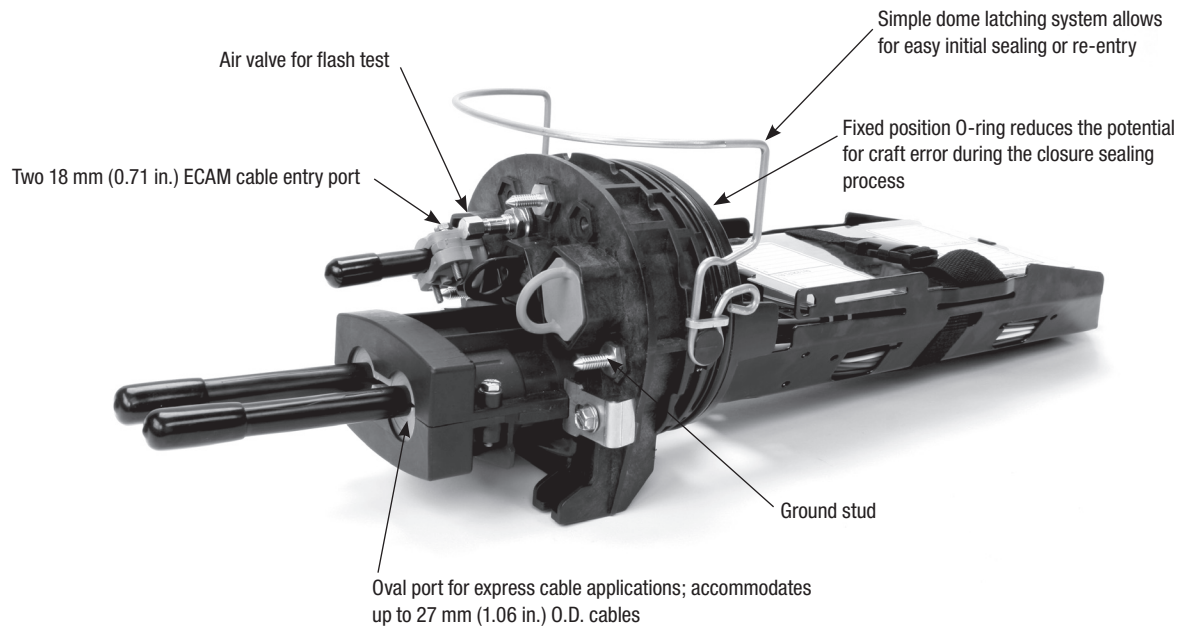
3M™ Fiber Dome Closure FDC 08

of the closure body. Also, the built-in cable entry system allows the technician to add and remove cables from the closure without breaking the cable seals. RUS Listed.

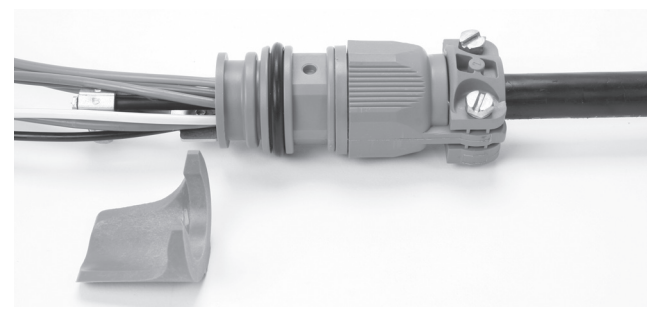
3M™ FIBER DOME CLOSURE AND TERMINAL CLOSURE

| FEATURES | BENEFITS |
|---|--|
| Compact size | Fits into small pedestals and handholes |
| Constructed of highly chemical-resistant material | Can be deployed in all environments: buried, underground and aerial |
| ECAM port design with true plug-and-play capability | May reduce installation and labor cost: cable preparation and installation is completed outside of the closure |
| Built-in cable entry termination system | Permits re-entry into the closure without breaking the cable seals |
| No special tools required | Simple installation and re-entry |
| Fixed O-ring seal | Easy, error-free closure sealing and re-entry |
| Innovative latching mechanism | Simple re-entry into closure by lifting the dome lid away from the base |

3M™ Fiber Dome Closure FDC 08 and FDT 08

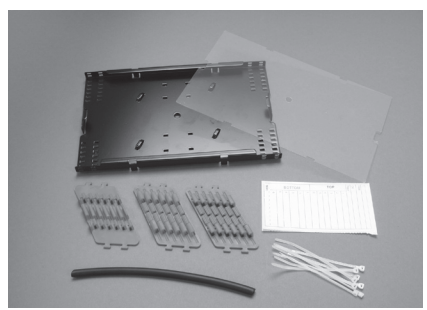


3M™ 12 mm External Cable Assembly Module (ECAM)Cable Entry Port

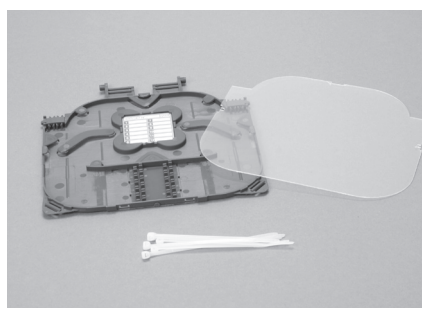


3M™ 18 mm External Cable Assembly Module (ECAM) Cable Entry Port

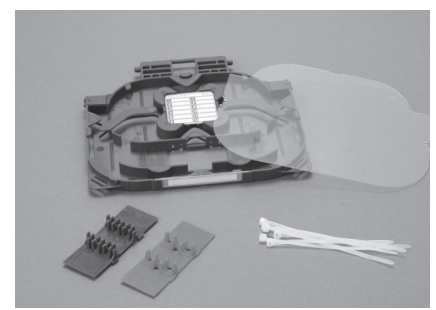
3M™ Fiber Optic Splice Tray



3M™ Fiber Optic Splice Tray 2538



3M™ Fiber Optic Splice Tray 2539



3M™ Fiber Optic Splice Tray 2540

3M™ Fiber Dome Terminal Closure FDC 08 and FDT 08 Splice Capacity

| Splice Tray Capacity | | Fiber Dome Closure Splice Capacity | | | | | |
|----------------------|--|---|--------------------------|------------------|---------------------|------------------|---------------------|
| Product Number | Description | Splices Accommodated | Splice Capacity Per Tray | FDC 08 | | FDT 08 | |
| | | | | Max No. of Trays | Max Splice Capacity | Max No. of Trays | Max Splice Capacity |
| 2538-24-DF/72-MF | Stackable tray, fiber entry/exit at any corner of the tray | Single fusion (45 or 60 mm) | 24 | 4 | 96 | 4 | 96 |
| | | Single mechanical (3M™ Fibrlok™ Splice) | 12 | 4 | 48 | 4 | 48 |
| | | Mass fusion | 72 | 4 | 288 | 4 | 288 |

Ordering Information for 3M™ Fiber Dome Terminal Closure FDC 08 and FDT 08

| Product Number | Description | Min. Order |
|----------------------|---|------------|
| FDT 08S-E-00-X-1A-A | Fiber dome terminal closure with one 20 mm double cable port, eight 12 mm ECAM ports, one 2538 tray, one ground stud | 1 |
| FDC 08S-B-01-X-01A-C | Fiber dome closure with one 27 mm double cable port, two 18 mm and one 12 mm ECAM cable ports, two 18 mm blank plugs, one 12 mm ECAM cable entry port kit, one 2538 tray, three ground studs | 1 |
| FDC 08S-B-01-X-02B-C | Fiber dome closure with one 27 mm double cable port, two 18 mm and one 12 mm ECAM cable ports, two 18 mm blank plugs, one 12 mm ECAM cable entry port kit, two 2539 trays, three ground studs | 1 |
| ACCESSORIES | | |
| 2538-24-DF/72-MF | Fiber splice organizer, 24 discrete fusion or 72 mass fusion splices, stackable | 2 |
| ECAM-12mm | 12 mm ECAM cable entry port | 4 |
| ECAM-18mm | 18 mm ECAM cable entry port | 2 |

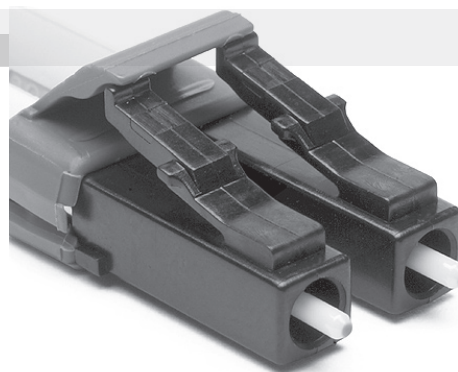
Ordering Information for 3M™ Fiber Dome Terminal Closure FDT 08 External Drop Termination

| Product Number | Description | Min. Order |
|--------------------|---|------------|
| ACCESSORIES | | |
| 2538-24-DF/72-MF | Fiber splice organizer, 24 discrete fusion or 72 mass fusion splices, stackable | 2 |
| SCAPC-900-COL1-4 | SCAPC 900 µm pigtail kit colors 1-4 | 1 |
| SCAPC-900-COL5-8 | SCAPC 900 µm pigtail kit colors 5-8 | 1 |
| SCAPC-900-COL9-12 | SCAPC 900 µm pigtail kit colors 9-12 | 1 |

3M™ Fiber Connectors

3M™ Hot Melt LC Connector

The only LC connector with hot melt adhesive. The LC connector offers all the advantages of the 3M hot melt technology, including fast installation, ease of termination, reliability, low insertion loss and very high yield. These singlemode and multimode connectors meet and exceed TIA 568B.3 requirements for both indoor and outdoor LAN applications. As with the 3M SC and ST hot melt connectors, there is no need for a syringe, applicator or mixing of epoxy with the LC connector.



3M™ Hot Melt LC Connector

Ordering Information for 3M Hot Melt LC Connector

| Product Number | Description | Pkg. | Min. Order | UPC 051115- |
|----------------|--|------------------|------------|-------------|
| 6600-S | MM hot melt simplex 900 BTW white boot | 1/bag, 60/carton | 60 each | 19027 |
| 6601-D | MM hot melt duplex 900 buffer white/beige boots | 1/bag, 60/carton | 60 each | 19029 |
| 6602-D | MM hot melt duplex 1.6-2.0 cable white/beige boots | 1/bag, 60/carton | 60 each | 18704 |
| 8600-S | SM hot melt simplex 900 BTW white boot | 1/bag, 60/carton | 60 each | 19034 |
| 8601-D | SM hot melt duplex 900 buffer white/beige boots | 1/bag, 60/carton | 60 each | 19036 |
| 8602-D | SM hot melt duplex 1.6-2.0 cable white/beige boots | 1/bag, 60/carton | 60 each | 18706 |

NOTE: MM – Multimode; SM – Singlemode

3M HOT MELT LC CONNECTOR

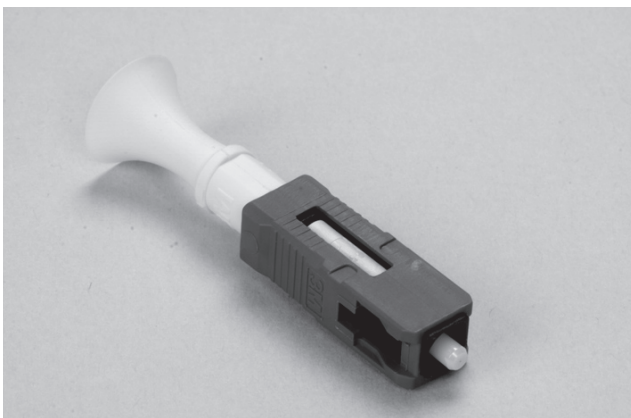
| FEATURES | BENEFITS |
|--|--|
| Hot melt factory injected adhesive | No epoxy mixing, no pot life, ready to install |
| Fast termination time | May help reduce labor in field |
| Precisely engineered polishing fixture | Provides exacting fiber finish for low loss and reflection performance |
| Meets and exceeds TIA-568B.3 performance | Helps provide user reliability |
| Typically <0.2 dB in field insertion loss | Network optical budget headroom |
| Consistent quality and application process | Reliable termination, minimal call backs |
| Compatible with industry standard LC form | Intermateable with installed base |
| Utilizes current hot melt kit with additional LC expansion kit | Minimal new tool purchase for existing hot melt users |

3M™ SC (Epoxy, Hot Melt, Crimplok™ and No Polish) Connector

3M has simplified the SC connector to enhance performance and cable retention and provide a readily field mountable connector. The SC epoxy connector complies with the NTT, JIS, ISO/IEC and TIA/EIA component and ISO/IEC, CENELEC, ANSI, TIA/EIA-568B.3 and cabling level standards. It features a rectangular push-pull coupling mechanism for easy insertion and high repeatability. The epoxy SC connector is available in singlemode and multimode.

3M Hot Melt SC connectors, available in singlemode and multimode, are preloaded with hot melt adhesive, enabling a field termination in less than two minutes. The SC connector is also available as the 3M™ Crimplok™ Connector, combining the speed of non-adhesive connectors with the performance characteristics of epoxy and hot melt connectors. Crimplok connectors are the ideal solution for emergency restoration work or where there is no power.

3M™ No Polish Connector (NPC) SCs utilize a one-piece, pre-assembled design that eliminates field polishing and loose parts. With a factory-polished ferrule assembly and a mechanical splice, the connector can be quickly installed—without electrical power—using a simple field tool. NPC is available in singlemode and multimode.



3M™ No Polish Connector SC

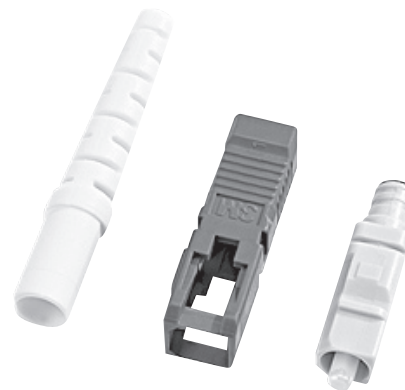


3M™ Hot Melt Connector ST

3M™ ST (Epoxy, Hot Melt and Crimplok™) Connector

3M has simplified the ST connector to help enhance performance and cable retention and provide a readily field mountable connector. The ST epoxy connector complies with the NTT, JIS, ISO/IEC and TIA/EIA component and ISO/IEC, CENELEC, ANSI, TIA/EIA-568B.3 and cabling level standards.

3M Hot Melt ST connectors, available in singlemode and multimode, are preloaded with hot melt adhesive, providing a field termination in less than two minutes. The ST connector is also available as the 3M™ Crimplok™ Connector, combining the speed of non-adhesive connectors with the performance characteristics of epoxy and hot melt connectors. Crimplok connectors are the ideal solution for emergency restoration work or where there is no power.



3M™ Hot Melt Connector SC

Ordering Information for 3M™ SC and ST Connector

| Product Number | Description | Pkg. | Min. Order | UPC 051115- |
|---------------------------------------|---|----------------|------------|-------------------|
| SC | | | | |
| 6300-W | Connector SC MM hot melt, white boot | 1/pkg., 60/cs. | 60 each | 91725* |
| 6800-62.5 | MM no polish 62.5µm ceramic | 1/pkg., 60/cs. | 60 each | 25823 |
| 6800-50 | MM no polish 50µm ceramic | 1/pkg., 60/cs. | 60 each | 25821 |
| 6800-50/LOMMF | MM no polish 50µm laser optimized ceramic | 1/pkg., 60/cs. | 60 each | 25822 |
| 6900 | Crimplok™ connector SC MM 125 µm | 1/pkg., 60/cs. | 60 each | 92815 |
| 8300 | SM hot melt ceramic | 1/pkg., 60/cs. | 60 each | 57747** |
| 8900 | SM crimplok ceramic | 1/pkg., 60/cs. | 60 each | 75386** 91723* |
| 8800 | SM no polish ceramic | 1/pkg., 60/cs. | 60 each | 21538 |
| ST | | | | |
| 6100-W | ST MM hot melt, white boot | 1/pkg., 60/cs. | 60 each | 91141* |
| 6100-B | ST MM hot melt, black boot | 1/pkg., 60/cs. | 60 each | 91142* |
| 6901 | ST MM Crimplok | 1/pkg., 60/cs. | 60 each | 92813* |
| 8100-YS | ST SM hot melt, yellow boot | 1/pkg., 60/cs. | 60 each | 36650* |
| 8901 | SM Crimplok ceramic | 1/pkg., 60/cs. | 60 each | 75388** |
| NOTE: MM – Multimode; SM – Singlemode | | | | |
| * UPC prefix 054007- | | | | |
| ** UPC prefix 051138- | | | | |

3M™ Fiber Optic Termination Kits and Accessories

3M™ Hot Melt Termination Kits

3M™ Hot Melt Termination Kits 6365 (120V oven) and 6361 (230V oven) contain all tools and materials necessary to terminate 3M™ Hot Melt SC, ST, and FC Connectors, both singlemode and multimode. The 3M™ LC Expansion Kit 6650-LC is used in addition to the 6365/6361 hot melt termination kits to terminate 3M Hot Melt LC Connectors.



3M™ Crimplok™ Termination Kit



3M™ Hot Melt Termination Kits 6365 and 6361

Ordering Information for 3M Hot Melt Termination Kits

| Product Number | Description | MOQ. | Pkg. | UPC 051115- |
|--------------------|---|------|------------|-------------|
| 6365 | Universal hot melt kit (120v) | 1 | 1 each | 16146 |
| 6361 | Universal hot melt kit (230v) | 1 | 1 each | 16145 |
| 6650-LC | LC expansion kit | 1 | 1 each | 18707 |
| ACCESSORIES | | | | |
| 6365-CC | Classic hot melt consumable kit | 1 | 1 each | 16192 |
| 6650-LS | LC lapping film singlemode consumable kit (polishes 400 connectors) | | 1 each | 19070 |
| | Lapping film, 9µm (461X) | | 20 sheets | |
| | Lapping film, 2µm (254X) | | 100 sheets | |
| | Lapping film, 0.5µm (661X) | | 40 sheets | |
| | Lapping film, final polish (863XW) | | 80 sheets | 15605 |
| 6650-LM | LC lapping film multimode consumable kit (polishes 400 connectors) | | 1 each | 19071 |
| | Lapping film, 9µm (461X) | | 20 sheets | |
| | Lapping film, 2µm (254X) | | 100 sheets | |

3M™ Crimplok™ Termination Kit

The Crimplok Termination Kit and accessories provide all tools and materials necessary to terminate Crimplok fiber optic connectors.

Product Number: 6955. Pkg (lbs.): 1 kit (0.40). Min. Order: 1 kit.
UPC: 051138-58238



3M™ Crimplok™ Termination Kit

3M™ No Polish Connector Kit

8865-C / 8865 (no cleaver) kits provide all the tools and materials needed to terminate singlemode and multimode 3M™ No Polish Connectors SC. Replacement parts are available.



3M™ No Polish Connector Kit 8865-C

Ordering Information for 3M No Polish Connector Kit

| Product Number | Description | Pkg . | UPC 051115- |
|---------------------|---|--------|-------------|
| 8865-C | No polish connector kit with cleaver | 1 each | 25804 |
| 8865 | No polish connector kit (no cleaver) | 1 each | 25803 |
| REPLACEMENTS | | | |
| 8865-AT | No polish connector assembly tool 250/900 | 1 each | 22799 |
| 2534 | Fiber cleaver | 1 each | 25802 |

